



2019

annual report

grace farms
foundation



Table of Contents

4	Founder's Letter
6	About Grace Farms Foundation
6	Vision & Mission
7	Our Values
8	2019 Leadership
10	Our Initiatives
12	Grace Farms' Sustainability Commitment
14	Experience Grace Farms
26	Our Impact 2019
28	Programs and Highlights
30	Initiative Highlights
30	Nature
36	Arts
42	Justice
52	Community
60	Faith
66	Select Partners 2019
72	Highlight New Outcome Grace Farms Foundation Architecture + Construction Working Group
82	Recognition and Support
90	Board of Directors
92	Photo Credits

Founder's Letter



(Left): Nobel Peace Prize winner and Congolese doctor, Dr. Denis Mukwege with Sharon Prince walking the River building

(Right): Sharon Prince shares *The Architect's Newspaper* article on the new Grace Farms Foundation Architecture + Construction Working Group



Grace and peace.

Grace and Peace are the purposeful words found in our Plaza, one of many welcoming spaces to enter Grace Farms. While these words remind us of our values and how we approach our work, they are also an invitation to experience grace and peace throughout our extraordinary [River building](#) and the surrounding 80 acres of rolling landscapes.

As we reflect on the past year, I look back at the unprecedented challenges presented by COVID-19. When Grace Farms closed in early March, we quickly pivoted to use our interdisciplinary humanitarian model and entrepreneurial ethos to fill the PPE supply/demand mismatch gap throughout Connecticut. We brought together local and global partners in the Grace Farms Alliance Against COVID-19. Through our Alliance and [Relief Fund for Connecticut](#), we expediently donated and delivered 1.9 million pieces of PPE to health care workers and provided food relief to our neighbors.

The pandemic and the [solidarity](#) around dismantling systemic racism heighten the need to break down barriers between people to foster a more just, diverse community. This is at the core of Grace Farms. We draw upon our private and public partnerships, cross-sector expertise, and leading artists to illuminate complex issues and address humanitarian crises with grace and peace.

On the heels of [Julianne Swartz's Joy, still](#) remarkable sound installation in the Sanctuary, [Carrie Mae Weems'](#) provoking *Past Tense* performance enraptured us with Imani Uzuri, Carl Hancock Rux, Eisa Davis and Francesca Harper, all of whom implored us not to forget the young black lives lost by police brutality.

Grace and peace require action. [Nobel Peace Prize recipient and surgeon Dr. Denis Mukwege](#), who is repairing lives of brutalized women at a staggering pace in the Democratic Republic of the Congo, poignantly urged us on towards courageous actions

by sharing his medical teams' work in a conversation with [Pulitzer Prize winning journalist Nicholas Kristof](#) on an unforgettable May afternoon in the Sanctuary.

Our commitment to end modern slavery and gender-based violence deepened over the past year through work on ethical supply chains and domestic violence. We presented a *Conscious Consumerism* series, exploring how companies and consumers can support ethical supply chains. To fight rising violence against women and children, Alina Marquez Reynolds, who is a former federal prosecutor and expert on the Violence Against Women Act, joined our team.

Our Nature Initiative addressed climate change with the Pollinator Pathway and restored native meadows critical to bees. Our sustainability efforts garnered our [second LEED certification](#) for Operations + Maintenance. We held round tables, panels, and provided Space Grants to 40 not-for-profit organizations working on community front lines. Our Faith Initiative explored concepts of a life worth wanting, and Dr. Matthew Croasmun, our Faith

Initiative Director, initialized a partnership with the [U.S. Army Chaplains](#), welcoming participants from around the world.

2019 was a pivotal year in our work to illuminate the issue of modern slavery in the building materials supply chain and to initialize a radical paradigm shift towards a slave-free built environment. We brought together more than 60 leaders as a part of the [Grace Farms Foundation Architecture + Construction Working Group](#), a first-of-its-kind initiative. We started a powerful movement; there is no turning back or looking away.

We press on with our purposeful actions to bring grace and peace more fully into the world,

S Prince

Sharon Prince
CEO and Founder
Grace Farms Foundation
August 2020

Vision

Grace Farms Foundation aspires to advance good in the world, providing a peaceful respite and porous platform to experience nature, encounter the arts, pursue justice, foster community, and explore faith.

Mission

Grace Farms Foundation supports initiatives in the areas of nature, arts, justice, community, and faith, and encourages participation locally and globally. The Foundation carries out its work through the publicly available facilities and integrated programs of Grace Farms, an 80-acre property owned and operated by the Foundation. Grace Farms was established as an essential platform for the Foundation, serving as a welcoming place where individuals, not-for-profit organizations, and government entities come together to collaborate for the common good.

Our Values

As we aim to advance good in the world, we believe that our culture and the manner in which we work carries the same significance as the outcomes we are trying to achieve.

Grace
We seek to understand and engage with one another with humility, forgiveness, and respect.

Peace
We pursue a just, diverse society through our initiatives and justice, starting with ourselves.

Excellence
Grounded in grace and peace, we continually aspire to elevate our collective work and place through an inner drive to go beyond what has been done before.

Openness
We communicate often and honestly, championing the resolution of issues promptly and directly.

Meaning
We cultivate meaningful community rooted in joy, integrity, and our common sense of purpose.

New Outcomes
We learn and collaborate broadly, generating new perspectives and outcomes to advance human flourishing.

2019 Leadership
as of December 2019

- Sharon Prince

CEO and Founder
- Kenyon Victor Adams

Arts Initiative Creative Director
- Matthew Croasmun

Faith Initiative Director
- Nicole Fealey

Director of Human Resources
- J. Mark Fowler

Nature Initiative Director
- Karen Kariuki

Community Initiative Director
- Rod Khattabi

Chief Accountability Officer and Justice Initiative Director
- Frank Kwei

Director of Hospitality
- Kate Maloney

Associate Director, Global Partnerships and Research
- Alina Marquez Reynolds

General Counsel and Justice Initiative Senior Advisor
- Tom Medico

Controller
- Fred Pickering

Director of Safety

- Elizabeth Rapuano

Director of Communications
- Pamela Ruggio

Arts Initiative Curator
- Sarah Scandiffio

Director of Events
- Ashley Sikora

Director of Marketing
- William Stonebridge

Director of Facilities
- Adam Thatcher

Director of Operations and Sustainability
- Chelsea Thatcher

Chief Marketing Officer
- Bill Tom

Director of Information Technology and Cybersecurity

63%
of women in leadership,
management, and supervisory
roles

50%
of leadership and management
that hold advanced degrees

57%
of all new hires in 2019
were women

Our Initiatives



As we aim to advance good in the world, we believe that our culture and the manner in which we work carries the same significance as the outcomes we are trying to achieve.

Nature

The Nature Initiative facilitates the stewardship of our natural world through restoration, exploration, and preservation. Grace Farms offers more than 30 weeks of multi-generational programming where the public can explore our native meadows, woods, wetlands, and ponds. Through interdisciplinary work with our Justice Initiative, the Nature Initiative team also works to protect endangered species and wildlife at a local and international level.

Arts

Arts at Grace Farms demonstrates our integrative vision and a dynamic interplay between people, architecture, and landscape. We develop and present new, collaborative, and site-responsive works at the intersection of the visual, literary, and performing arts by convening artists and practitioners across disciplines to explore complex subjects through an inquiry-based approach.

Justice

The Justice Initiative disrupts modern slavery, gender-based violence, and international wildlife trafficking by empowering local, national, and global justice systems, non-governmental agencies, and the public. Leveraging our law enforcement expertise and a unique interdisciplinary approach, we implement policy, training, and advocacy focused on eradicating these injustices.

The Grace Farms Architecture + Construction Working Group (GFFA+CWG) raises awareness of modern slavery within the building materials supply chain, Designing for Freedom. The expanding GFF A+CWG includes over 60 experts and leaders within the ecosystem of the built environment to remove the imprint of modern slavery from the architecture and global construction industry.

Community

We provide a warm, welcoming environment that fosters meaningful community among people of all ages, backgrounds, and interests. Using Grace Farms as an essential platform for our work, we offer programmatic gathering spaces, a diverse range of self-directed recreational and social activities, and opportunities for individuals and not-for-profits to forge new ideas, relationships, and partnerships.

Faith

We offer opportunities for reflection and dialogue to explore the nature of flourishing life. Additionally, we host workshops that engage a variety of faith leaders and educators, including the U.S. Army Chaplains Corps, empowering them to help make a difference in their own faith communities.



Grace Farms' Sustainability Commitment

Sustainable Commitment – Awarded Our Second Prestigious LEED Certification

Stewardship of Grace Farms' 80 acres and operations requires a daily commitment, one that restores and protects our fragile ecosystem both locally and globally. Our stewardship commitment has made significant progress over the past five years, including the reduction of greenhouse gases and restoration of native habitats. This year, Grace Farms Foundation was awarded our second prestigious LEED Silver certification for Operations + Maintenance, led by Adam Thatcher, Director of Operations and Sustainability. Paired with Grace Farms' 2016 LEED Certification for Building + Maintenance, we demonstrate our ongoing commitment to sustainability.

[Read more here](#)

Sustainability Achievements

30%
reduction of greenhouse gas emissions from operations (2016 - 2019)

2,300
trees inventoried on site, which capture more than 650,000 lbs. of carbon

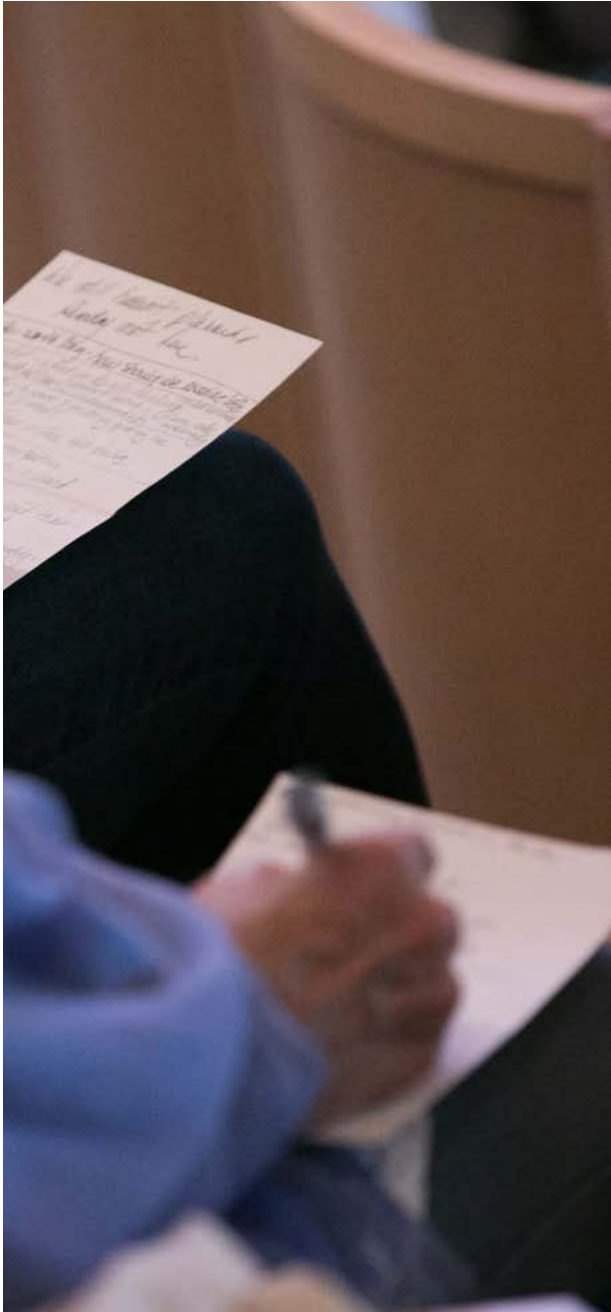
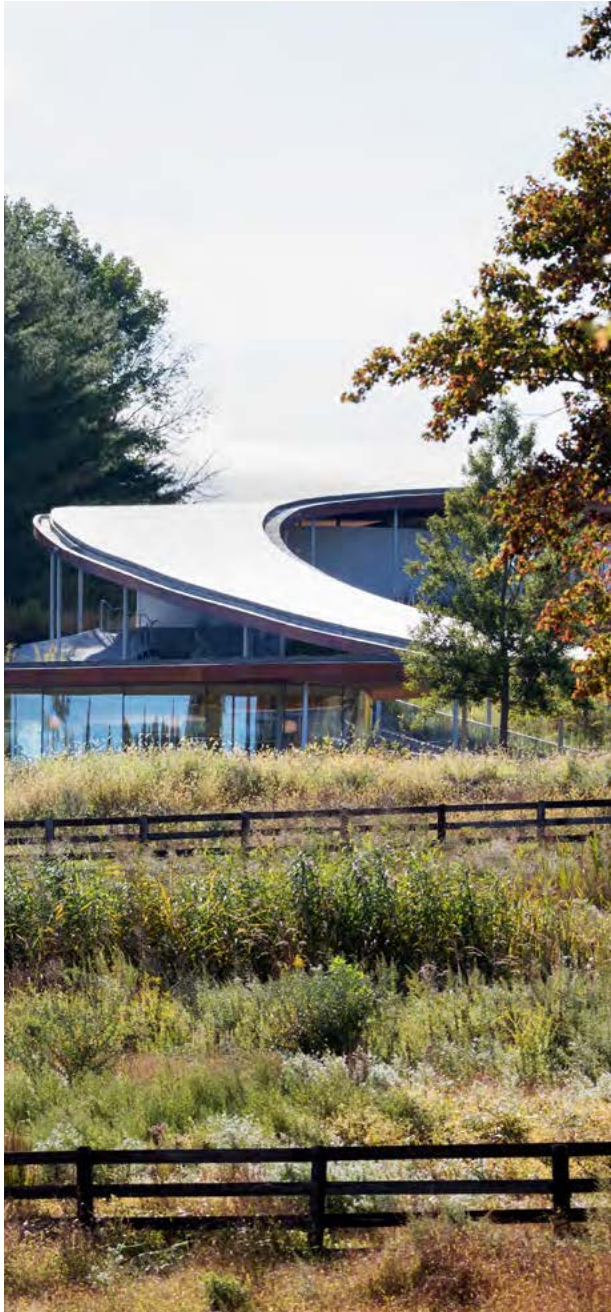
40,000
perennial grasses and flowers installed as part of our three-acre native meadow expansion

experience grace farms













our impact

2019

The curvilinear and multipurpose River building, embedded in 80 acres, creates a hopeful space for productive inquiry, collaboration, and public engagement. Our work is grounded by the belief that space can communicate our set of values and activate our mission. The result is a new kind of publicly available space, peaceful, yet vibrant, where new outcomes emerge to address our most pressing humanitarian issues.

2

Memorandums of Understanding (MOU) executed with strategic partners **Liberty Shared** and the **Lusaka Agreement Task Force**, increasing collaboration and capacity to combat human trafficking and dismantle transnational illegal wildlife trafficking networks

1,500

Visitors participated in *Our Season of Light* community service programs including *Gifting for Good*, the *Giving Tree*, and the *Person-to-Person Toy Store*

50

Not-for-profits and 24 businesses engaged in the *Innovation and Impact Series* inaugural panel discussion

60+

Experts and industry leaders convened across the ecosystem of the built environment as part of the Grace Farms Foundation Architecture + Construction Working Group, launching a first-of-its-kind initiative to combat modern slavery in the building materials supply chain

70%

Of Grace Farms' acreage has been restored to pollinator-friendly native habitats

1,665

Visitors were welcomed to our monthly **Community Dinners**, a gathering that fosters meaningful community among people of all ages, backgrounds, and interests

400

Events and programs hosted by Grace Farms in 2019

1,800

Pounds of food was harvested from our **Community Garden**, with 10% donated to Person-to-Person for **food relief efforts**

1,100+

Individuals from not-for-profits, government agencies, and quasi-governmental agencies on the front lines of service participated in our **Space Grants program**, a 26% increase over 2018

Types of Programs and Highlights



Public Awareness

<i>Ending Violence Against Women</i> panel with Dr. Mukwege and Nicholas Kristof (Sept. 21)	Carrie Mae Weems Lecture + <i>Past Tense</i> Performance (March 15 - March 23)	Connecticut Institute of Refugees and Immigrants (CIRI) and Save the Children <i>Forced from Home</i> (May 17)
The Nature Conservancy <i>Restoring Wild in Urban and Suburban Areas</i> panel discussion (April 26)	<i>The Humanitarian Impact of Conflicts in the Middle East</i> with General (ret.) Petraeus and the Institute for the Study of War (June 18)	<i>What's Worth Wanting?</i> presentation (Sept. 20)



Intergenerational Engagement

Open Arts Studio for Families, <i>Practicing</i> , and Grace Farms-inspired activities	Seasonal Nature Walks	Open Pick-Up Basketball and Pickleball
Birdwatching at Grace Farms and spring migration birdwatching (Seasonal)	Astronomy at Grace Farms - Waxing Gibbous Moon, Spring Equinox, Circumpolar Constellations, Perseid Meteor Shower, (Seasonal)	Monthly Community Dinners



Trainings

Sexual Assault and Domestic Violence Self-Defense Training (March 5 - April 2)	Port Stakeholder Anti-Wildlife Trafficking Workshop in Dar Es Salaam, Tanzania (July 2 - 4)
Forced Labor Curriculum and Training with U.S. Customs and Border Protection (November 20)	Human Trafficking Training in Bucharest, Romania (March 27 - 30)



Stewardship and Community Service

<i>Season of Light</i> End-of-Year Programming: Walter E. Lockett, Jr. Foundation + The Yerwood Center at The Boys and Girls Club in Stamford - <i>Gifting for Good</i> (December 13)	Connecticut Institute of Refugees and Immigrants (CIRI)- Grace Farms Giving Tree (December)	Source to Sound River Cleanup (April 11th)
	Pura Vida for Children <i>Mailbox Brigade</i> (December)	Ongoing partnerships with New Canaan Bee Club and Food Rescue US



Facilitating Education and Resources

<i>Designing for Freedom</i> panel on ethical building materials (November 15)	Respite / Discussion with U.S. Office of Army Chaplains and Dr. Matthew Croasmun (July, November)	Architecture & Sustainability Tours
<i>Life Worth Living</i> Program with Yale Center for Faith & Culture (October - December)	<i>Where Innovation and Impact Connect A New World of Philanthropy</i> (November 7)	Gardening Workshops w/ Master Gardener Nick Mancini (Multiple Dates)
		Julianne Swartz Joy, <i>still</i> . Installation and Artist Tea & Tour (Multiple Dates)

Nature Initiative

The Nature Initiative facilitates the stewardship of our natural world through restoration, exploration, and preservation. Grace Farms offers more than 30 weeks of multi-generational programming where the public can explore our native meadows, woods, wetlands, and ponds. Through interdisciplinary work with our Justice Initiative, the Nature Initiative's experts also work to protect endangered species and wildlife at a local and international level.

How we heal nature together is anchored in our own hopeful story.

How we heal nature together is anchored in our own hopeful story. Our CEO and Founder transformed 80 acres of non-diverse landscape into a restorative respite for wildlife and the public. We restored the acreage into ten biodiverse native habitats, including meadows and woodlands, bringing back over 100 species of birds, including the American Kestrel, North America's smallest falcon.

We've also made ongoing efforts to conserve and protect over 2,000 mature trees on site, which absorb more than 130,000 pounds of carbon dioxide a year from the atmosphere, the greenhouse gas most responsible for global warming or climate change. These instances are all part of an inspiring model for preserving and restoring wild on a regional, national, and global scale. It also demonstrates how we can employ nature-based solutions as a cost-effective strategy to address climate change.

Within a short time, Grace Farms has been able to accelerate change through our interdisciplinary approach with our other initiatives and partners. For instance, the Nature and Justice Initiatives work together to combat environmental crime, including global deforestation,

a \$20 billion criminal network fueled by exporting and possessing wild flora, timber, and animals.

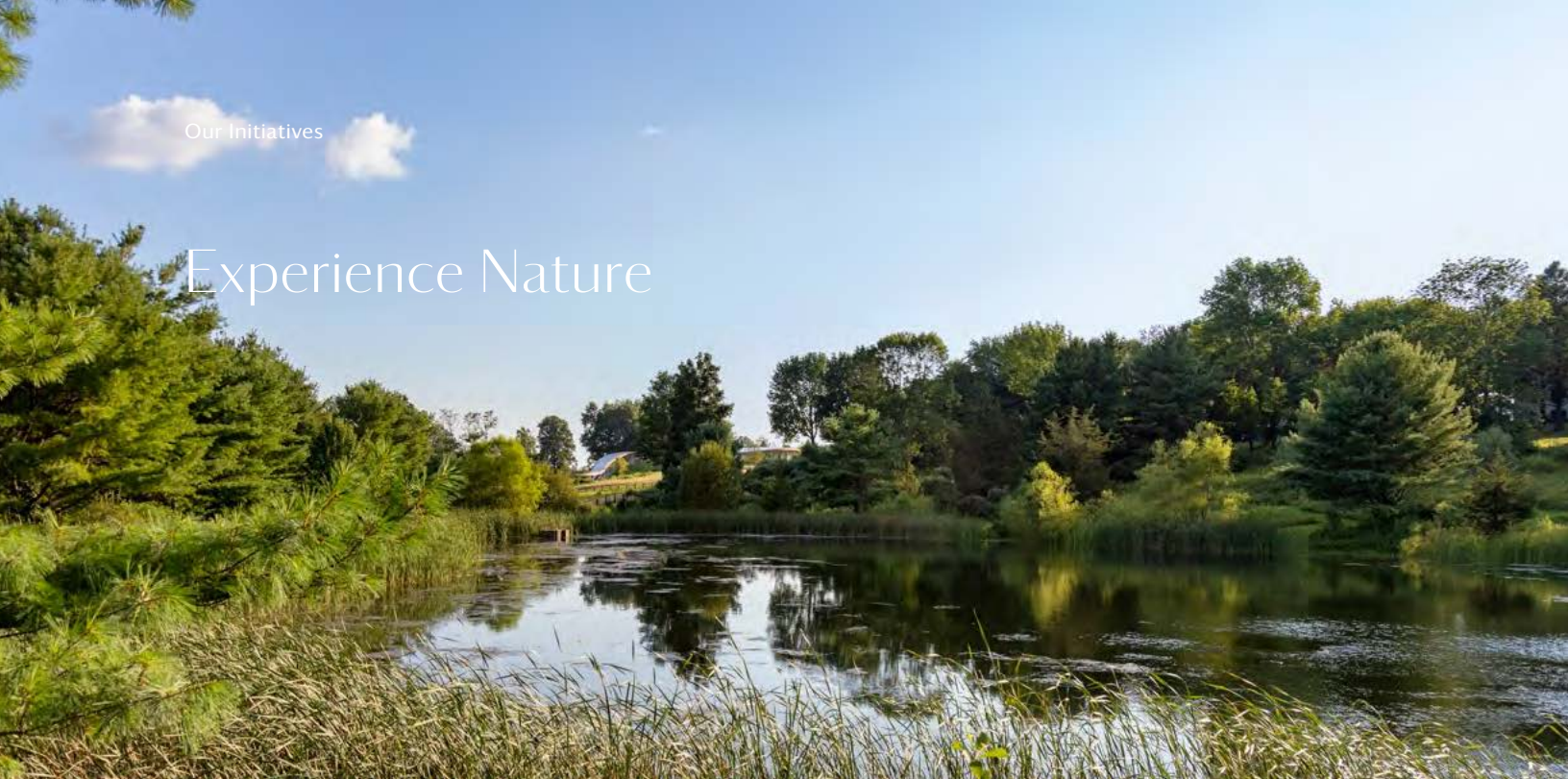
Through the Justice Initiative's law enforcement expertise in combating human trafficking and the Nature Initiative's conservation approach, we have developed a unique model to train and build capacity to fight environmental crime.

Our year-round and seasonal programming invites environmental leaders to Grace Farms, which helps to raise awareness on topics ranging from climate change to protecting endangered wildlife. In addition, we also offer a wide range of hands-on learning experiences. These programs aim to inspire a stewardship of nature - from cleaning up local watersheds to producing organic food on site for local families in need.

By raising awareness and accelerating change around some of our most intractable environmental issues, we can collectively build an impactful model to ensure a sustainable future.

J. Mark Fowler
Nature Initiative Director

Experience Nature



“Whether here in Connecticut or across the globe, The Nature Conservancy is grateful to work with partners like Grace Farms Foundation in moving people to conservation action.”

- Dr. Frogard Ryan,
The Nature Conservancy,
Connecticut State Director

2015

Established year-round free nature programing for people of all ages, offering exploratory opportunities of the natural world within our 80-acre preserve.

2016

Collaborated with the Arts Initiative on our **Earth Day** celebration and invited contemporary artist Kysa Johnson to create an immersive installation, [*Landscape Continuum*](#). The artist used the Pavilion's floor-to-ceiling glass panes to tell the evolutionary history of the local environment.

2017

Brought back the American Kestrel to Grace Farms by restoring native meadows and installing nesting boxes. The Kestrel, the smallest and most common falcon in North America, is beneficial to the environment and farmers due to its consumption of crop pests.

2018

Established relationships to advocate for the preservation of open space and restoration of native habitats with organizations such as the **Trust for Public Land** and **The Nature Conservancy**.

Launched a collaboration with the Justice Initiative to develop international training programs to combat environmental crimes.

2019

Joined the local and regional Pollinator Pathway initiative, a nation-wide movement that protects and establishes essential native habitats for pollinators, including bees and butterflies.

Nature Engagement

a year of impact

Local & Regional

100

Bird species identified at Grace Farms, an increase from 40 species in 2015, as a result of restoring our native meadows

20,000

Pounds of trash collected along Norwalk River and Five Mile River

30 weeks

Free nature-based experiential programming in the areas of astronomy, birdwatching, and meadow walks

440

Attendees to astronomy lectures

Global

20

African countries with which we partner and collaborate to combat wildlife trafficking

130,000

Pounds of carbon sequestered from atmosphere by trees on Grace Farms' property in 2019

Nature Engagement

2019 impact examples



Céline Cousteau

Céline Cousteau, filmmaker, environmentalist, and granddaughter of the legendary Jacques Cousteau, presented an exclusive screening of her new film *Tribes on the Edge*, a raw and evocative documentary that reveals the daily struggles of the last few remaining tribes fighting for survival in the Amazon.



The Nature Conservancy

As part of our Earth Day celebration, we partnered with environmental experts from **The Nature Conservancy** to discuss the importance of restoring native habitats. The Nature Conservancy, a leading local, national, and global not-for-profit, discussed harnessing nature's power to build resilient, livable, and thriving communities.

Arts Initiative



Arts at Grace Farms demonstrates our integrative vision and a dynamic interplay between people, architecture, and landscape. We develop and present new, collaborative, and site-responsive programming at the intersection of the visual, literary, and performing arts by convening artists and practitioners across disciplines to explore complex subjects through an inquiry-based approach.

"What art seeks, and what contemporary artists are uniquely positioned to contribute, is a way of knowing that reclaims and re-asserts memory, imagination, intuition, and the senses."

Grace Farms is a contemporary project with an aspiration to integrate humanizing work across multiple disciplines, representing five core aspects of human flourishing. In response to this vision, the Arts Initiative, inspired by the integrative potential of Grace Farms, applies a methodology uniquely developed to express the Foundation's mission to increase flourishing and advance good in the world. Our inquiry-based, process-focused approach is called *Practicing*, which applies rigorous thinking and making to questions framed by multiple perspectives, in a setting that encourages contemplation.

Situated among 80 acres, the acclaimed River building inspires creativity through a dynamic interplay of people, architecture, and landscape. Site-responsive programming manifests on the grounds at Grace Farms and beyond, in the form of new works or perspectives that go on to influence artists' work in exciting and unexpected ways.

The Foundation believes that artists are critical to many aspects of its work. Through their practice, artists examine and approach contemporary issues in ways that elevate, inform, and contextualize both the private contemplations and public actions of the Grace Farms community. To deepen their integration with the Foundation's work, artists intersect with staff experts and contributors from our other four initiatives and

the disciplines they represent. Through this process, the Foundation's work across all initiatives is enriched, expanding the thought and practice of artists and collaborators alike. As a result, artists are more widely understood by the public as essential agents of change, both at the societal and personal level.

Through the lens of the *Practicing* approach to program development at Grace Farms, the Arts Initiative convenes workshops in which artists from across disciplines have the space and time to investigate and deeply explore their practices and subject matter with other artists as well as with contributors from other fields related to the inquiries at hand. Workshops, which produce a variety of public programming for all ages such as showings, installations, publications, lectures, and family activities, have inspired interdisciplinary projects in various forms integrating dance, music, poetry, and installation. *Practicing* contributors and alumni include leading artists such as **Garnette Cadogan, Silas Farley, Ross Gay, Bill T. Jones, Ilya Kaminsky, Andrea Miller, Nicole Sealey, and Julianne Swartz.**

Kenyon Victor Adams
Arts Initiative Creative Director



Encounter the Arts

"The spotlight is on the practicing...Time and space are given to the process of discovery and exploration...That's what is celebrated in this initiative so that's exciting."

-Silas Farley,
Dancer and Choreographer

2015

Activated Grace Farms, a new kind of public space, featuring **SANAA**, **Thomas Demand**, **Olafur Eliasson**, **Teresita Fernández**, **Beatriz Milhazes**, **Susan Philipsz**, **Aloe Blacc**, **Paul Taylor American Modern Dance**, **Matthew Rushing**, and **New Chamber Ballet**.

2016

Began developing our core methodology *Practicing*, an inquiry-based approach framed by multiple perspectives with examinations of empathy, awe, silence, and joy.

Began *Race & American Memory*, a multi-year, cross-initiative program examining the ways in which Americans comprehend and recall national history, featuring a keynote lecture by **Dr. Ibram X. Kendi**.

2017

Introduced a suite of family programs, including facilitated activities, discovery guides, play spaces, and library resources that offer windows into the Arts Initiative's focus themes and artistic discoveries. These programs provide museum-standard experiences for children and caregivers to enjoy together.

2018

Provided a collaborative space for interdisciplinary artist **Julianne Swartz** to develop *Joy, still.*, a site-responsive installation in the River building, which synthesized the *Practicing Joy* workshops.

Provided a collaborative space for multidisciplinary artist **Meredith Monk**, to develop *Cellular Songs*, the latest music theater work in her five-decade career.

2019

Supported acclaimed artist **Carrie Mae Weems** with a residency during which she continued her ongoing investigation of violence. Weems' contributions included a public lecture and a full-cast presentation of her performance-based work, *Past Tense*.

Arts Engagement

a year of impact

Local
&
Regional

2,480

Participants in weekly *Open Arts Studio for Families* program

10

Active peer alliances with regional cultural organizations

National

575

Members of the public attended two programs with Carrie Mae Weems: an artist lecture and full-cast presentation of the performance-based work *Past Tense*

7,000

Number of visitors to artist Julianne Swartz's three-part installation *Joy, still.* in the River building at Grace Farms

250

Arts Initiative artists contributed to programming since opening

37

Artistic practices represented in programming since opening

Arts Engagement

2019 impact examples



Time with Alyson Shotz

In 2019, sculptor **Alyson Shotz** explored the subject of time with an interdisciplinary group of collaborators including a theologian, physicist, poet, composer, and choreographer. The four-season study at Grace Farms will span a series of workshops anticipated to produce site-responsive projects and programs for all ages.



Open Arts Studio for Families

In 2019, the Arts Initiative designed a set of new intergenerational activities inspired by Grace Farms, including the architecture, landscape, living collections, and permanent artworks. These programs took place in the River building and Community Garden, encouraging families to explore color, sound, light, space, movement, rhythm, line, shape, and texture.

Justice Initiative

The Justice Initiative disrupts modern slavery, gender-based violence, and environmental crime by empowering local, national, and global justice systems, non-governmental agencies, and the public. Leveraging our law enforcement expertise and a unique interdisciplinary approach, we implement policy, training, and awareness programs focused on eradicating these injustices.

The foundation of our justice work is based on the inherent right of liberty and equality for all.

When Grace Farms opened in 2015, we sought to ambitiously advance good in the world, launching a Justice Initiative designed to forge new outcomes in the fight against modern slavery, gender-based violence, and environmental crimes. We grounded our approach in best practices and experience, leveraging a deep knowledge of law enforcement expertise and an ability to unite dynamic networks of allies across the private, public, and not-for-profit sectors. Through our targeted model of training, policy, and advocacy, we have made considerable progress in our work to support trafficking victims, educate the public, and hold those that perpetuate these crimes accountable.

Training: Training remains the bedrock of the Justice Initiative. We employ customized intelligence, investigative, and operational curriculum at the behest of governments and NGOs across the globe. Since opening in 2015, we have trained more than 2,500 individuals representing law enforcement agencies, NGOs, and social service providers, on cybersecurity, identifying and preventing modern slavery, and stopping environmental crimes.

Policy: We are committed to bringing together global experts and survivors to identify best practices and make recommendations to promote accountability for violations of international law. In 2019, we executed two new strategic partnerships with [Liberty Shared](#) (a counter-trafficking non-governmental organization) and the [Lusaka Agreement Task Force](#) (a multilateral law enforcement organization representing seven eastern

and southern African countries), formally acknowledging a convergence of will between our organizations to uphold and enforce essential policies and laws related to human trafficking and environmental crimes.

Advocacy: Our public programming with industry thought leaders and policy experts raises awareness about modern slavery, environmental crimes, and gender-based violence. In 2019, we welcomed Nobel Peace Prize winner **Dr. Denis Mukwege** and former CIA director and retired **General David H. Petraeus** to discuss ending violence against women and the humanitarian impact of the conflict in the Middle East. In 2019 alone, more than 1,500 people attended panel discussions promoting awareness of how to combat human trafficking and environmental crimes.

While modern slavery, gender-based violence, and environmental crimes are complex problems, our cross-sector and collaborative approach has proved effective in disrupting the conditions that allow these injustices to exist. Leveraging our shared values, collective action, and diverse expertise, we will continue to build new pathways towards effective interventions, while energizing a global coalition to help us rise to this monumental challenge.

Rod Khattabi, Chief Accountability Officer and Justice Initiative Director

Justice



“Stakeholder and partner training is very important ... our relationship with Rod Khattabi and Grace Farms will offer local law enforcement, financial crimes teams, and NGOs a structured approach to improving their activities and knowledge.”

- Duncan Jepson, Managing Director of Liberty Shared

2015

Established a program to train local, national, and global law enforcement to combat human trafficking, forced labor, and gender-based violence.

2016

Facilitated a workshop on human trafficking with **United Nations University**, which led to a UN Security Council resolution to combat human trafficking in conflict.

2017

Developed a media campaign in partnership with WPP's J. Walter Thompson and Geometry Global to communicate the global issue of modern slavery in a new way. This anti-trafficking campaign would initiate new ways of raising awareness around modern slavery.

2018

Signed a MOU with the **country of Georgia** to partner on supply chain transparency projects. Georgia plans to develop a green, sustainable, and technologically smart country within the next 10 years.

2019

Signed a MOU with LATF, initializing a critical strategic partnership to conserve and safeguard wildlife and forestry species in Africa through cooperative law enforcement capacity building and training.

Justice Engagement

a year of impact

Local
&
Regional

1,500

Attendees for public programs promoting awareness of how to combat human trafficking, gender-based violence, and environmental crimes

3

Public programs offered in a new series, *The Demand for Ethical Supply* chains, which explored emerging strategies and sustainable business models in the fight against labor trafficking in supply chains

Global

5 countries

In which we've hosted anti-trafficking law enforcement trainings

8 modules

Customized for each anti-trafficking law enforcement training

2 major
international
partnerships

Liberty Shared

A partnership agreement with the not-for-profit Liberty Shared to train national and international law enforcement agencies on modern slavery and environmental crimes through investigative methodologies, data gathering, and analysis management

LATF

In a collaboration with our Nature initiative, we signed a partnership agreement with the **Lusaka Agreement Task Force (LATF)**, a law enforcement inter-governmental agency representing seven African countries to train officers on disrupting environmental crimes

Justice Engagement

2019 impact examples



Nobel Peace Prize-winner Dr. Denis Mukwege & Pulitzer Prize-winning journalist Nicholas Kristof

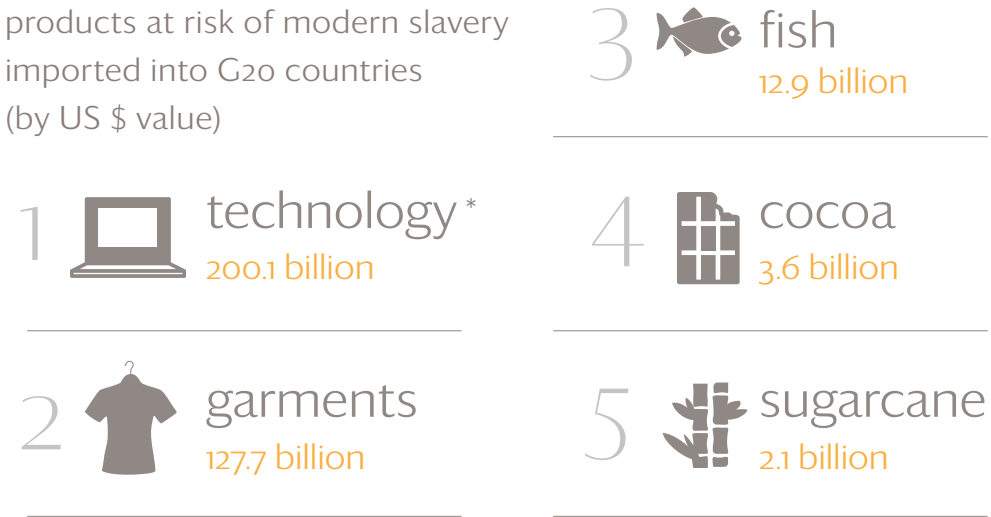
Grace Farms provides a collaborative platform to invite world leaders and humanitarians such as **Dr. Denis Mukwege**, 2018 Nobel Peace Prize-winner and founder and medical director of Panzi Hospital. In conversation with acclaimed journalist **Nicholas Kristof**, Dr. Mukwege discussed how the hospital provides life-saving medical treatment for survivors of sexual violence in the Democratic Republic of the Congo.

"We know when they come to the hospital, we are trying to help give them hope, too...We can't get peace in this region if we don't address the question of justice."

Dr. Denis Mukwege
at Grace Farms

Top 5 At-Risk Slave Made Products

products at risk of modern slavery
imported into G20 countries
(by US \$ value)



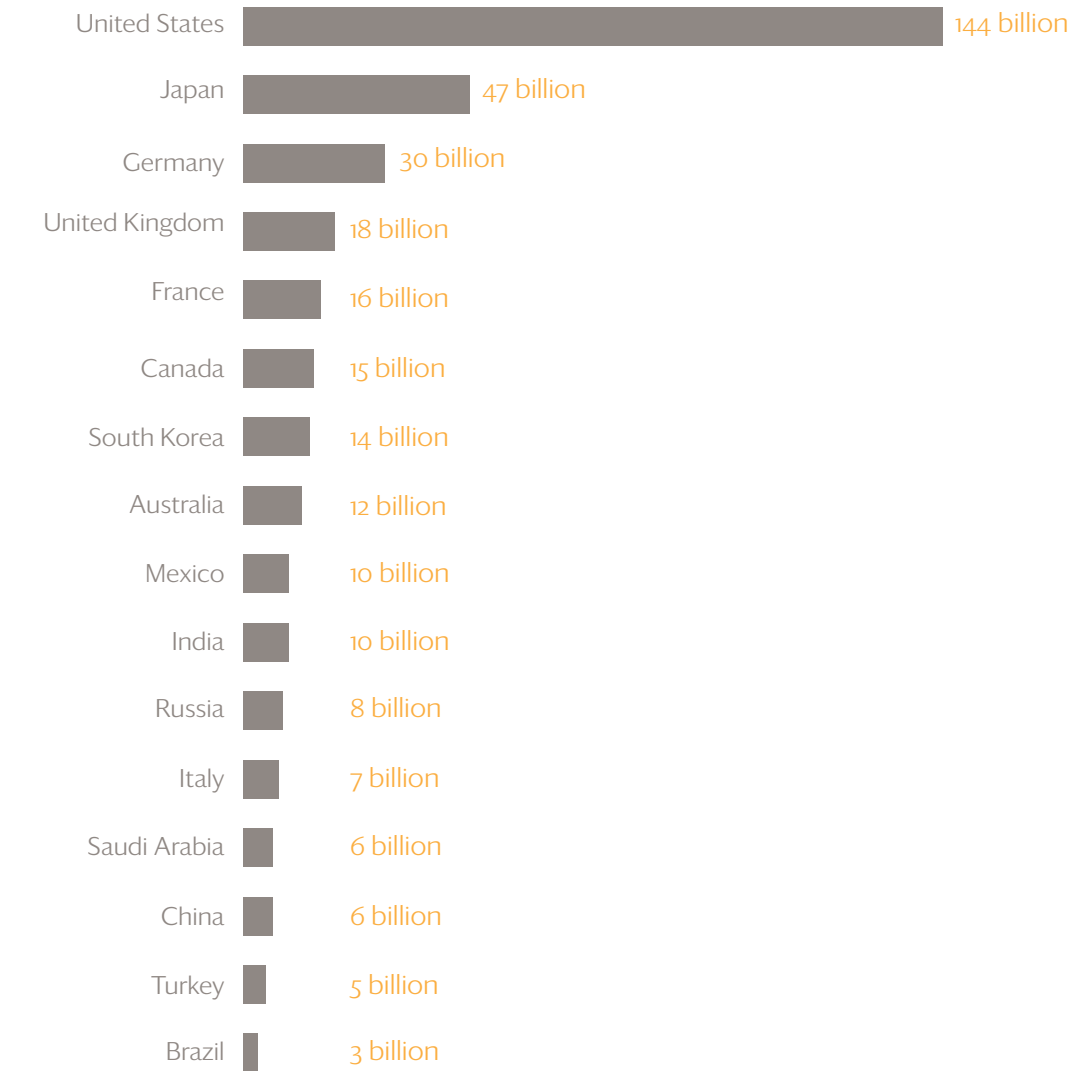
Source: Global Slavery Index 2018
* Technology is comprised of laptops, computers, and mobile phones.

Timber and brick, used widely in construction projects globally, falls in the top 15 of at-risk products imported by G20 countries.

Our consumption patterns are directly linked to the ubiquity of modern slavery in the world. Slavery is currently the second largest criminal industry and the fastest growing crime.

Read our *Perspectives* piece
[The Demand for Ethical Supply](#)

Top Consumers of At-Risk Slave Made Products (G20 Countries)



“Grace Farms is...almost an unprecedented cultural institution because of the range of activities and functions that are brought together in this building that gently undulates across the landscape.”

Barry Bergdoll, Hon. AIA NY President, Center for Architecture



Community Initiative



We provide a warm, welcoming environment that fosters meaningful community among people of all ages, backgrounds, and interests. With Grace Farms as an essential platform for our work, the Community Initiative offers programmatic gathering spaces, a diverse range of self-directed recreational and social activities, and opportunities for individuals and not-for-profits to come together to foster unity, forge new relationships and ideas, and advance good in the world.

We catalyze and sustain change through a continuum approach.

Change is best catalyzed in community, that change is built by community, and systemic change is sustained by community. By engaging diverse audiences and putting them in proximity to some of the most pressing humanitarian issues of our time, we seek to foster communities that are civil, communities that flourish, and communities that are inclusive of all - with the goal of generating thought and action toward sustained social impact.

At Grace Farms, we embrace the intertwined texture of community. In a world that can feel increasingly siloed, we imagine community in a new way. We catalyze and sustain change through a continuum approach. We invite our community to gather, support, and engage through private and public programming, working sessions, service projects, support with strategic resources, and action groups to advance good within and across sectors and communities.

Through our Space Grants program, we have provided those at the front lines of service with hopeful spaces to advance their work and access to new models of social change. Since opening, we have expanded our partnership reach by 75 percent and added eight global

partners. The work that is done within and across these organizations in classes, retreats, trainings, and collective impact seminars has generated bold ideas, created unique collaborations, and advanced strategic missions.

The Community Initiative has extended its platform with the goal of driving systemic change. In 2019, we launched our unique [Impact and Innovation Series](#), a succession of engagements with leaders across sectors to pursue collaborative efforts and explore models that pursue innovative strategies while achieving profound social change. Through this series, philanthropic participants identified new ways of investing and private sector participants identified new models of collaboration, while not-for-profits were able to determine ways to effectively pivot and modify sustainability strategies.

By fostering a community that is reflective of all, we are building a pipeline of both thought and action to advance good, together.

Karen Kariuki
Community Initiative Director

Community



"Many of the girls attending our summits have never experienced a space like Grace Farms... [For many] it was the first time they experienced the wonders of nature."

- Sheri West, Founder and CEO, LiveGirl

2015

Opened Grace Farms on October 9 with a community opening weekend and welcomed 5,000 participants. Two weeks later, we launched our not-for-profit Space Grants program.

2016

We honored the 15th anniversary of 9/11 with Voices of September 11th, one of our not-for-profit partners that works with public and private partners to promote healing and resiliency in the lives of those impacted by traumatic events.

2017

Launched **Gifting for Good** program to support those in need during the winter season. Together, with our community partners, we assemble care packages of essential items and distribute them through our not-for-profit partners.

2018

Invited retired [United States Army General Wesley K. Clark](#), in partnership with the New Canaan Library, to discuss global policy and America's potential for growth and leadership.

2019

Scaled the Space Grants program to include more national and international organizations, including eight organizations with global reach.

Community Engagement
a year of impact

Local
&
Regional

100+

People from 50 not-for-profits and 24 social enterprises and businesses engaged in the inaugural *Innovation and Impact Series* panel discussion

5

Cross-sector thought leaders engaged for *Innovation and Impact Series* (The Atlantic Philanthropies, Global Innovation Fund, Give Directly, Impact Fairfield County, Warby Parker)

1,550

Participants in *Season of Light* programs, including *Gifting for Good*, *Giving Tree*, and *Person-to-Person Toy Store*

24,000

Visits to the Court for free unstructured recreational basketball and pickleball

Space
Grants

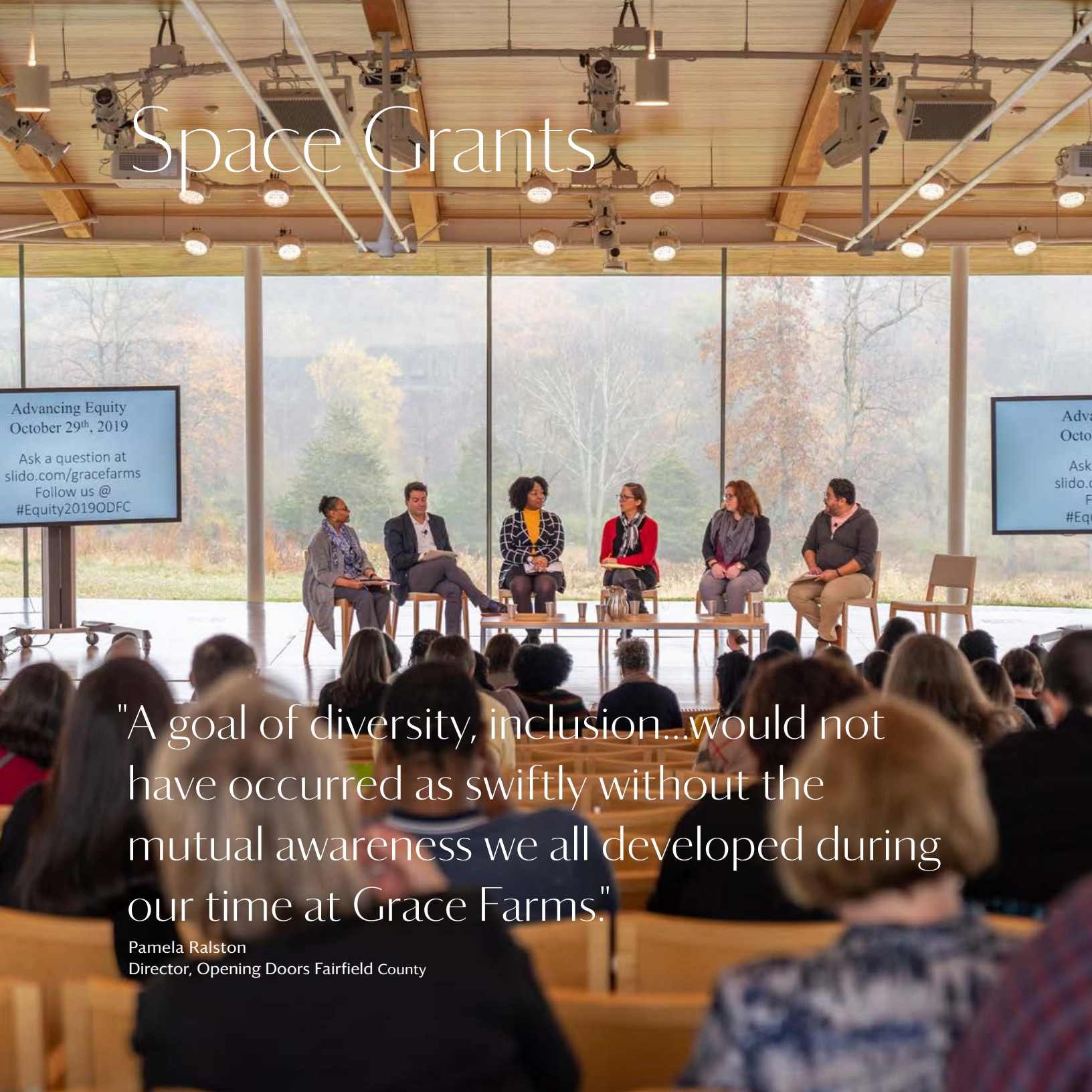
35

Mission-aligned partner organizations, including not-for-profits, government agencies, and quasi-governmental agencies, engaged through Space Grants

190

Programs hosted for not-for-profits through our Space Grants program

Space Grants



"A goal of diversity, inclusion...would not have occurred as swiftly without the mutual awareness we all developed during our time at Grace Farms."

Pamela Ralston
Director, Opening Doors Fairfield County



Space Grant Partners by Initiative, 2019

Nature

Keep America Beautiful
The Nature Conservancy

Arts

Arts for Healing Art and Music Therapy
Rubin Museum of Art
Sacred Arts Initiative
The Shed

Justice

Domestic Violence Crisis Center
International Organization for Adolescents (IOFA)
Save the Children
Nomi Network
YWCA Greenwich

Community

Abilis (Court)
Ability Beyond (Court)
Americares
Blossom Hill Foundation
Building One Community
Country Children's Center
Fairfield County's Community Foundation
Impact Fairfield County
LiveGirl
New Canaan Basketball Association
New Canaan Cares
New Canaan Community Foundation
Norwalk Community College
Pequot Library
Person-to-Person

Resiliency Center of Newtown
Rockefeller Brothers Philanthropy Advisory
Saint Joseph Parenting Center
Stamford Public Education Foundation
STAR
Supportive Housing Works
Westchester Youth Alliance
Westchester Community Foundation
Young President's Organization

Faith

Hartford Seminary

Highlight | 5 years as not-for-profit partners Pura Vida for Children



Coming together to help children who have been orphaned, abandoned or sex trafficked

During our *Season of Light* programs, we place an additional emphasis on serving those in need. With our partner Pura Vida, along with support from the New Canaan and greater Grace Farms community, we make decorations in exchange for suggested donations. All proceeds support Pura Vida's efforts to raise awareness and provide food for hungry, orphaned, abandoned, or trafficked children.

Faith Initiative



We offer opportunities for reflection and dialogue to explore the nature of flourishing life. Additionally, we host workshops that engage a variety of faith leaders and educators, including the U.S. Army Chaplains Corps, empowering them to help make a difference in their own faith communities.

We recognize that we each have our own importantly different visions of flourishing life and that these visions are a crucial part of any work we might want to do together.

The great treasure of the Faith initiative is our question: What is the shape of flourishing life? This question is the most important of our lives. As human beings, we are purposive creatures; everything we do is aimed at something we judge worthy of our humanity.

The problem is that we can be *wrong* when we judge what is worthy of our humanity. We can be fundamentally deceived about the nature of flourishing life—deceived by systemic moral psychologies like white supremacy, patriarchy, and anthropocentrism; deceived by moral myopathy that gives disproportionate weight to our own experiences and viewpoints; deceived by moral lethargy that resists the thought that our humanity might demand so much of us, or by moral masochism that rejects the possibility that some aspect of flourishing life might lie close at hand.

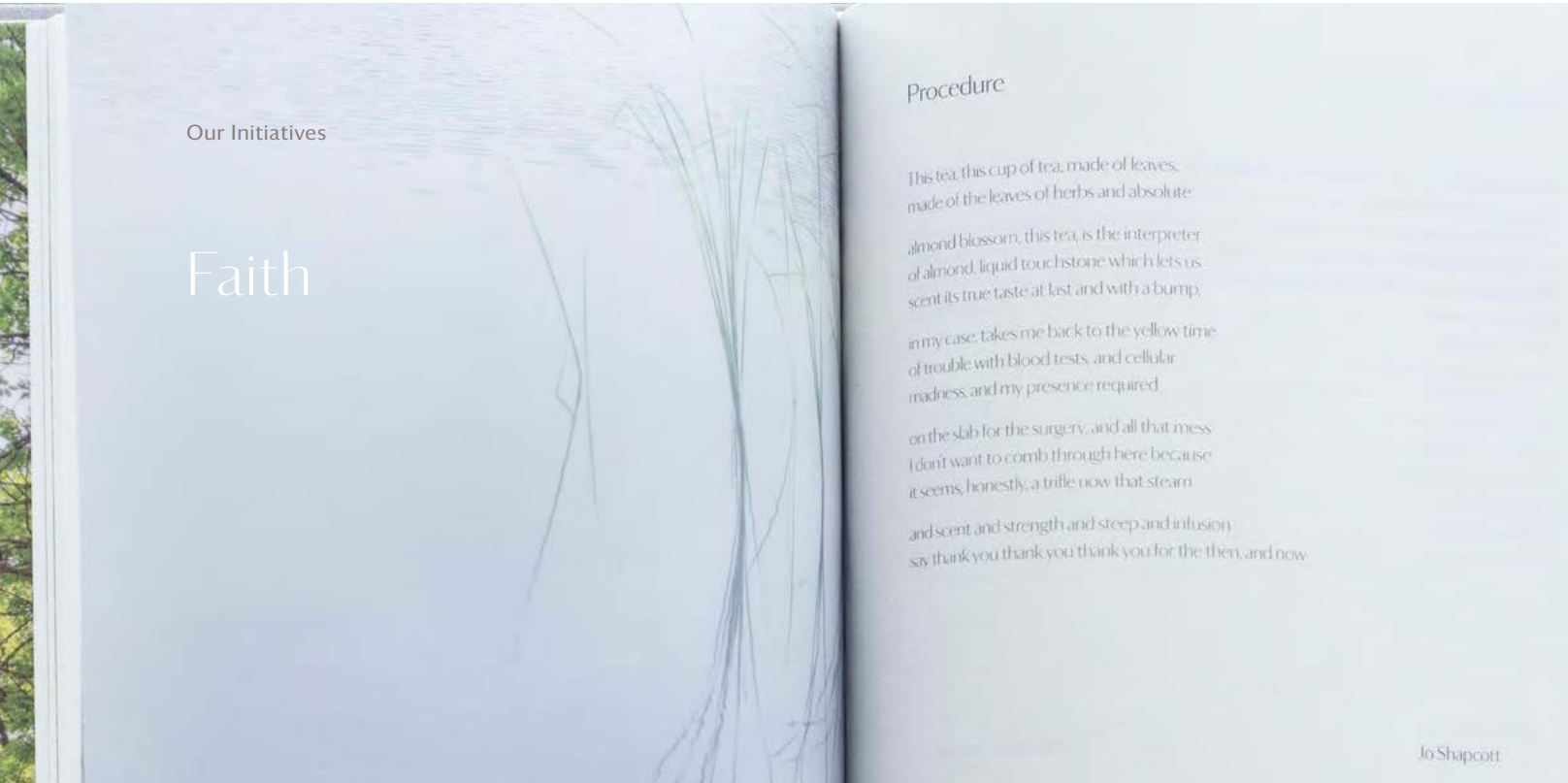
The result is that the judgements we make about the shape of flourishing life are both important and incommensurable. We disagree with one another, and the substance of our disagreements matter very much; they are about the very nature of our shared humanity.

Faced with uncomfortable and inescapable disagreements about matters of fundamental importance, two options

immediately present themselves. First, is the option to claim some particular set of answers as universal—often “Judeo-Christian” values on the right, a slurry of principles “we all agree on” so abstract as to be meaningless on the left. The second option is to propose that whatever disagreements we have are simply a matter of personal opinion and should be restricted to the private sphere. This is the option that champions a “secular” public space.

But Grace Farms’ Faith Initiative proposes a third option: *genuine pluralism*. In this mode, we recognize that we each have our own importantly *different* visions of flourishing life and that these visions are a crucial part of any work we might want to do together. This means taking seriously our differences even as we work to recognize shared values. In dialogue, we do our best to discern the sorts of lives we deem worthy of our shared humanity. And, knowing our vision is always limited, we nevertheless act courageously in the urgency of the moment.

Dr. Matthew Croasmun
Faith Initiative Director



“Faith in a sense is always seeking understanding.”

•Miroslav Volf
Founder and Director of Yale
Center for Faith & Culture
Grace Farms Foundation
Board of Directors

2015

Established Grace Farms as a welcoming environment for reflection and contemplation, set apart from the pace of our daily lives, but responsive to the realities of the world around us.

2016

Invited broad audiences to explore open, gracious discourse around faith with Pastor Greg Zehner and guest speakers including Geshe Dhargey, a Buddhist Monk, and Dr. Kareem Adeeb, a Muslim Imam.

2017

Forged partnerships to foster multi-denominational and interfaith dialogue, including offering the [*Life Worth Living*](#) course under the direction of **Dr. Miroslav Volf, Professor of Theology at Yale** and Grace Farms Foundation Board Member.

2018

Developed programing to provide deeper conversations around faith. Invited renowned journalists **Michelle Boorstein** (*The Washington Post*) and **Wajahat Ali** (*CNN & The New York Times* contributor) to discuss faith and media.

2019

Appointed Dr. Matthew Croasmun as the Foundation's first Faith Initiative Director, an Associate Research Scholar and Director of the *Life Worth Living* Program at Yale University, expanding opportunities for people of all faiths and backgrounds to reflect and explore the nature of flourishing life.

Faith Engagement

a year of impact

Local & Regional

720

Hours of public engagement and dialogue through *Life Worth Living* academic course in collaboration with Yale Center of Faith & Culture and mindfulness workshops by Copper Beech Institute

216

Hours invested by the community in our 6-week *Life Worth Living* program, fostering a deeper understanding of flourishing life

Global

60

Members of the U.S. Army Chaplains Corps explored with our Faith Initiative how to serve soldiers with authenticity and grace

20

Hours of dialogue through 8-week Mindfulness Workshops by Copper Beech Institute

380

Participants in *For the Life of the World: Theology that Makes a Difference* and *What's Worth Wanting* programs

13

Local faith communities engaged through the New Canaan Interfaith Council

Faith Engagement

2019 impact examples



U.S. Army Chaplains

The U.S. Army Chaplains from around the world, which has been supporting soldiers’ diverse spiritual needs since 1775, traveled to Grace Farms to discuss with our Faith Initiative Director, “What makes life most worth wanting?”

“What we’re looking at are ways to learn from other organizations,” said Chaplain (Colonel) Jonathan McGraw, Strategy Initiatives Director, Office of the Army Chief of Chaplains, Pentagon. [Listen here](#)



Interfaith Seder

Our Interfaith Seder offered the community an opportunity to engage in diverse conversation with community interfaith leaders and our Faith Initiative Director. In the supportive and welcoming environment of Grace Farms, they encourage discussions related to the similarities and differences among faiths.

Select Partners 2019

Program Partners

American Institute of Architects

Advocates for the value of architecture and provides architects the resources they need to do their best work

Center for Architecture

Is a leading cultural venue for architecture and the built environment in New York City

Cheetah Conservation Fund

Dedicates itself to saving the cheetah in the wild

Connecticut Institute for Refugees and Immigrants (CIRI)

Provides high-quality legal, social, and educational programming for refugees, immigrants, and survivors of human trafficking and torture

Copper Beech Institute

Is a non-sectarian not-for-profit that teaches mindfulness and meditation

Homeland Security Investigations

Is a critical investigative arm of the Department of Homeland Security

Interfaith Council of Southwestern Connecticut

Provides spiritual leadership to solve community problems in southwestern Connecticut

Institute for the Study of War

Advances an informed understanding of military affairs through reliable research, trusted analysis, and innovative education

LiveGirl

Equips girls with the necessary leadership skills to thrive and make a positive impact on the world

The Nature Conservancy

Is recognized as one of the most effective and wide-reaching environmental organizations in the world

New Canaan High School Bee Club

Promotes the local bee population by keeping bees around the town

Norwalk Department of Police Services

Provides protective and support services to the City of Norwalk and its citizens

The Office performing arts + film

Is an independent curator and production company based in New York and London

Panzi Foundation

Supports the preeminent medical treatment center for survivors of sexual violence in conflict zones in the Democratic Republic of the Congo, healing bodies, minds, families, and communities

Person-to-Person

Provides individuals and families with assistance for basic needs to overcome daily challenges and access to resources to improve lives in Fairfield County

Pura Vida for Children

Raises awareness to help children who are starving, orphaned, abandoned or sex trafficked, as well as mobilizes financial resources to meet the most urgent needs

STAR Lighting the Way

Serves individuals of all ages with intellectual and developmental disabilities in Fairfield County

Save the Children

Is the world's first global charity for children, providing a healthy start, an opportunity to learn, and protection from harm

U.S. Attorney's Office, District of Connecticut

Prosecutes all criminal and civil cases brought by the Federal government and defends the United States when it is a party in a civil case

U.S. Office of Army Chaplains

Provides ministry worldwide, accompanying soldiers and families as they carry out their units' missions in both peace and war

Yale Center for Faith & Culture

Critically examines and promotes practices of faith which advance authentic human flourishing and the global common good

Voices of 9/11

Helps families heal after tragedy, a vital mission that began after 9/11

Walter Lockett Foundation

Focuses on youth development with *Books to Basketball*, life skills, and career awareness programs.

Boys & Girls Club of Stamford

Provides a welcoming, positive environment for kids and teens to participate in life-changing programs, and build supportive relationships

The Source to Sound Cleanup of local waterways with our partners

Norwalk River Watershed Association, Norwalk River Valley Trail, Town of Norwalk

International Partners

African Union

Is a continental body consisting of the 55 member states that make up the countries of the African Continent, which was officially launched in 2002 as a successor to the Organization of African Unity

Freeland

Protects vulnerable people and wildlife from organized crime and corruption, while guarding and revitalizing ecosystems and communities

H.S.I. Global Trade Investigations Division

Provides oversight and support for investigations of U.S. import and export laws to ensure national security and protect the public's health and safety

Interpol

Is the International Criminal Police Organization, an inter-governmental organization with 194 member countries that helps police to work together to make the world a safer place

Liberty Shared

Aims to prevent human trafficking through legal advocacy, technological interventions, and strategic collaborations with NGOs, corporations, and global financial institutions

Lusaka Agreement Task Force (LAFT)

Is an inter-governmental organization that facilitates cooperative activities among member states to the Lusaka Agreement, helping to carry out investigations on violations of national laws pertaining to illegal trade in wild fauna and flora

National Anti-Poaching Task Force in Tanzania

Combats poaching and wildlife trafficking in Tanzania



Our Justice Initiative facilitated a panel discussion on ethical supply chains and how companies like West Elm are changing the paradigm. From left to right: Rebecca van Bergen, Founder and Executive Director of U.S.-based not-for-profit Nest, Doug Guiley, Senior Vice President of West Elm Global Sourcing and CSR Williams-Sonoma, Inc., and Pete Spain, Co-Founder and COO of eye heart hand.

National Task Force on Wildlife Crime in Uganda

Fights poaching and associated wildlife trafficking in this African nation

Tanzania Revenue Authority, Wildlife Management Authority & Ports Authority

Are key governmental agencies in Tanzania working together to combat wildlife trafficking

Uganda Wildlife Authority

Is the government agency responsible for the management and protection of wildlife in and outside of protected areas

USAID

Leads international development and humanitarian efforts to save lives, reduce poverty, strengthen democratic governance, and help people progress beyond assistance

Featured Presenters

Dr. Kareem Adeeb | Wisdom Literature, Ancient Wisdom for Modern Times

Mohamed Almasri, Syrian refugee resettled in Norwalk | Forced From Home

Rebecca Van Bergen, Nest, The Demand for Ethical Supply | Conscious Consumerism

Wendy Block, Impact Fairfield County | Innovation, Impact and a New World of Philanthropy panel

Amb. Luis C.deBaca, Senior Justice Initiative Advisor at GFF | Designing for Freedom

Céline Cousteau, documentary filmmaker | Protecting the Amazon, Tribes on the Edge

Rev. David Van Dyke, Wisdom Literature | Ancient Wisdom for Modern Times

Doug Guiley, Senior Vice President, West Elm Global Sourcing & Williams Sonoma | The Demand for Ethical Supply | Conscious Consumerism

Laura Green, Naturalist Program Fellow, Yale School of Forestry | Nature Walks

Tim Haag, Teacher, New Canaan Highschool | Astronomy series

Casey Harrity, Senior Director of Humanitarian Programs, Save the Children | Forced From Home

Joe Huston, CFO Give Directly | Innovation, Impact and a New World of Philanthropy panel

Karen Jarmoc, President and CEO of Connecticut Coalition Against Domestic Violence | Fighting Domestic Violence, A Multi-Faceted Approach

Dr. David Johnson, Co-Director, Yale University School of Medicine and Post Traumatic Stress Center | Domestic Violence Fighting Domestic Violence, a Multi-Faceted Approach

Dr. Kimberly Kagan, President of ISW | The Humanitarian Impact of the Middle East Conflict with the Institute for the Study of War

Nicholas Kristof | Pulitzer Prize-winning journalist, Ending Violence Against Women

Ben King, Chief Strategy Officer, The Atlantic Philanthropies | Innovation, Impact and a New World of Philanthropy panel

Senator Joseph Lieberman | The Humanitarian Impact of the Middle East Conflict with the Institute for the Study of War

Sandrine Harris, an experienced meditation facilitator and mind-body practitioner | Copper Beach Institute, Trauma & Recovery Working Session

Rabbi Joshua Hammerman | Wisdom Literature, Ancient Wisdom for Modern Times

L.Y. Marlow, author and domestic violence survivor | Fighting Domestic Violence, A Multi-Faceted Approach

Dr. Laurie Marker, Cheetah Conservation Fund, January After Dinner | Protecting Wildlife | Saving the Cheetah

Pascale Mittermaier, Global Managing Director of Cities at The Nature Conservancy | Restoring Wild in Urban and Suburban Areas

Dr. Denis Mukwege | Nobel Peace Prize winner, Ending Violence Against Women

Nat Oppenheimer, EVP, Silman Associates and structural engineer for Grace Farm | Designing for Freedom

Reverend Dr. Harry Pappas, Archangels Greek Orthodox Church | Ancient Wisdom for Modern Times

General David H. Petraeus, U.S. Army, Retired | The Humanitarian Impact of the Middle East Conflict with the Institute for the Study of War

Anne Richard, Former Assistant Secretary of State for Population, Refugees, and Migration | Forced From Home

Julianne Swartz, artist | Tea & Tour with Julianne Swartz

Jesse Schultz Sneath, Director, Social Innovation at Warby Parker | Innovation, Impact and a New World of Philanthropy panel

Hayes Slade, President of AIA New York and Founding Partner and Principal of Slade Architecture | Designing for Freedom

Pete Spain, Chief Operating Officer, Kate Spain | The Demand for Ethical Supply | Conscious Consumerism

Miroslav Volf, author, Grace Farms Foundation board member and Yale Center for Faith and Culture | For the Life of the World

Carrie Mae Weems, multi-media artist | *Past Tense* and lecture

David Weinberger, Senior Researcher at the Berkman Klein Center for Internet and Society | The Demand for Ethical Supply Social Impact Investing

Richard Wiese, Explorers Club | Protecting Wildlife | Saving the Cheetah

Geoffrey Berman, Former United States Attorney, Southern District of New York | Homeland Security Training on Dark Web/Cybersecurity

Nzinga Broussard, Senior Director of Analytics at Global Innovation Fund | Innovation, Impact and a New World of Philanthropy panel

Robert J. Darling, Lieutenant Colonel, United States Marine Corps (Ret.) National Security, Customs and Border Patrol Training | Forced Labor Investigations and Enforcement

Pascal Mittermaier, Global Managing Director of Cities at The Nature Conservancy | Restoring Wild in Urban and Suburban Areas

William Nardini, Chief Criminal Division, United States Attorney, District of Connecticut | United States Attorney's Office Training on Dark Web/Cybersecurity

LaTresse Snead, Deputy Director of GlobalCities at The Nature Conservancy | Restoring Wild in Urban and Suburban Areas



(top) L.Y. Marlow, author and survivor of five generations of abuse, speaking on a panel promoting the importance of working collaboratively to prevent intimate partner violence.

(bottom) An important conversation about the global refugee crisis moderated by Anne Richard, the former Assistant Secretary of State for Population, Refugees, and Migration, and speakers from the Connecticut Institute for Refugees and Immigrants and Save the Children; and Mohamed Almasri, a refugee from Syria resettled in Norwalk in 2016.

Highlight New Outcome:
GFF A + CWG
Grace Farms Foundation
Architecture +
Construction
Working Group

modern slavery is illegal in every country

U.N. Palermo Trafficking Protocol 2000
Ratified by 173 countries

global UN's Sustainable Development Goal 8.7 ties us together in the fight against modern slavery



US Federal TFTEA 2015

US CA Supply Chain Transparency Act

uk Modern Slavery Act

australia Modern Slavery Act

A woman with blonde hair, wearing a grey and white plaid vest over a white long-sleeved shirt, stands in front of the screen. She is holding a small black object in her left hand and gesturing with her right hand.

Highlight New Outcome Grace Farms Foundation Architecture + Construction Working Group

More than a year ago, Sharon Prince and Bill Menking, publisher of *The Architect's Newspaper*, discussed the fact that no one was talking about the role modern slavery plays in the architecture and construction industries and what we could do together to eliminate slavery from the building materials supply chain.

From that initial conversation, the [Grace Farms Foundation Architecture + Construction Working Group \(GFF A + CWC\)](#) was formed. Since then, we have invited an expanding group of experts and leaders to discuss how we can raise awareness of modern slavery in these industries and create outcomes that will ensure a clean, ethical building materials supply chain. Our goal is to build institutional responses, including the development of slave-free specifications and auditing standards in the procurement of construction materials. This unprecedented movement, which aims to eliminate the subsidization of ROIs [returns on investments] through the pernicious use of slavery along the supply chain, will create meaningful and lasting impact.

goals

illuminate the
permanent imprint of
slavery
in building materials supply chains

create a
radical paradigm shift
within the built environment

big business

11%

The construction industry is one of the largest in the world and accounts for more than 11% of global GDP. (Verité)

2025

A report from Global Construction Perspective and Oxford Economics predicts that by 2025 the construction industry will grow by more than 70% to \$15 trillion globally. (Verité)

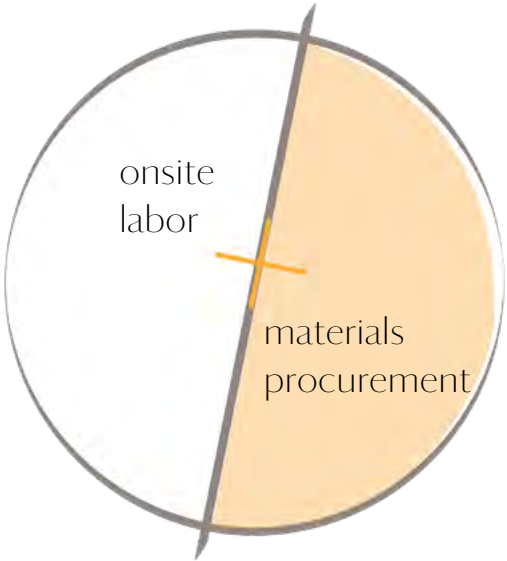
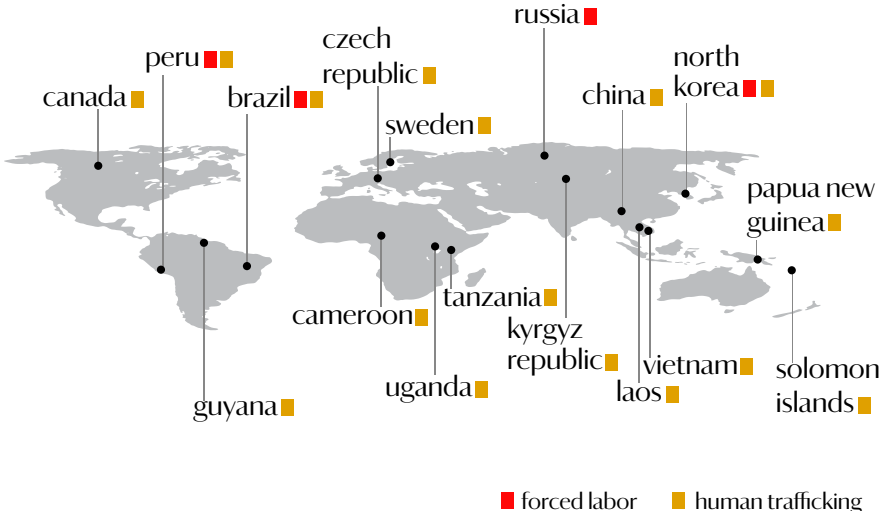
“It is time to recognize our responsibility,” Prince said, “and subsidizing construction projects with forced labor on job sites is only half of the slavery issue. Illuminating forced labor in building material supply chains, that design teams specify, has not yet begun. We must turn our attention to the built environment and eradicate modern slavery’s permanent imprint.”

The Architect’s Newspaper, September 4, 2019

forced labor and human trafficking in building materials is pervasive

take a look at the other half of the issue

Material Study | Instances of forced labor and human trafficking in timber worldwide



We are shining a light on the materials procurement process, an overlooked source of forced labor in the architecture, engineering, and construction sector.

2019 GFF A + CWG Highlights

September 4

GFF A+CWG announced in *The Architect's Newspaper* and *Architectural Record*. First meeting held at the Center for Architecture, hosted by Barry Bergdoll (Center for Architecture President), Hayes Slade (AIA NY President-elect & Slade Architecture), and Benjamin Prosky (AIA NY Executive Director).

September 5

Participants of GFF A+CWG presented the abstract for *Designing for Freedom: Ending Modern Slavery in the Built Environment* to the 2019 International Association for Bridge and Structural Engineering Congress (IABSE) in New York City. The abstract was presented by Nat Oppenheimer and Amb. Luis C.deBaca.

October 6

Sharon Prince participated on a panel at the Top1000Funds Fiduciary Investors Symposium held at Harvard University. The discussion focused on *Can the Finance Industry Help Impact Modern Slavery?*

October 24

Sharon Prince publicly shared the work of the GFF A+CWG with more than 1,000 industry leaders at the 2019 Heritage Ball.

November 15

At Grace Farms, the *Designing for Freedom* panel discussion provided an opportunity for the public and industry professionals to learn more about the use of modern slavery in material procurement in the built environment with Sharon Prince, Amb. Luis C.deBaca, Nat Oppenheimer and Hayes Slade. All speakers are part of GFF A + CWG.



Grace Farms Foundation Architecture + Construction Working Group members, consisting of global leaders in the built environment, meet at the Center for Architecture in New York City.



The first U.S. public program (November 15) discussing forced labor in building material supply chains, hosted at Grace Farms and moderated by Amb. Luis C.deBaca, Former United States Ambassador-at-Large to Monitor & Combat Trafficking in Persons.



At the Center for Architecture in New York City (left to right) Hayes Slade, 2019 AIA NY President; Sharon Prince, CEO and Founder, Grace Farms Foundation; Benjamin Prosky, Ex. Director AIA NY; Barry Bergdoll, Center for Architecture President.

GFF A + CWG Members (as of January 2020)

Adams, Kenyon Victor Grace Farms Foundation, Arts Initiative Creative Dir.	Bradley, Paul Lendlease (U.S.), Global Supply Chain Manager	Coppedge, Susan (Amb.) Former United States Ambassador-at-Large to Monitor & Combat Trafficking in Persons	Franklin, Sydney <i>Architect's Newspaper</i> , Assoc. Editor
Baxi, Kadambari Barnard, Professor, Who Builds Your Architecture?	Bronet, Dr. Frances Pratt Institute, President		Gans, Deborah GANS Studio, Founder
Bergdoll, Barry Center for Architecture, Board President	Bucher, Alissa Rogers Partners, Associate Partner	Crawford, Jill Type A Projects, Partner	Gilbert, Jared CookFox Architects, Dir. of Communications
Berke, Deborah Yale School of Architecture, Dean	Burke-Vigeland, Madeline Gensler, Principal	Darling, Diana <i>The Architect's Newspaper</i> , Co-founder and Publisher	Gorman, Jay Sciam Construction, Project Executive/ Assistant Vice President
Bernstein, Phil Yale School of Architecture, Assoc. Dean	Califano, Mark Dentons, Partner	Denison, Dirk Dirk Denison Architects, Founding Principal and MCHAP Director at IIT	Green, Michael MGA, a Katterra Company, President and CEO
Blackstock, Kaley Gensler, Sustainable Design Specialist	C.deBaca, Luis (Amb.) Grace Farms Foundation, Justice Initiative Sr. Advisor and Former United States Ambassador-at-Large to Monitor & Combat Trafficking in Persons	Dixit, Laura Diamond Columbia, Ph.D., <i>Who Builds Your Architecture?</i>	Guilliams, Gabe BuroHappold, Principal Lighting Specialist
		DuBois, Bill Gensler, Construction Specifier	

Harriss, Dr. Harriet Pratt School of Architecture, Dean	Maloney, Kate Grace Farms Foundation, AD of Global Partnerships & Research	Ricks, Alan MASS Design, Founding Principal	Ulicny, Dr. Brian Thomson Reuters Labs - Boston, Founding Member
Hernandez-Eli, Jhaele NYC Economic Development Corp., SVP	Marroquin, Diego The World Around, Co-Founder, Developer	Rillosi, Antonio Extra Vega, Founder & CEO	
Idenburg, Florian SO-IL, Founding Principal	McGuigan, Cathleen Architectural Record, Editor-in-Chief	Rogers, Rob Rogers Partners, Partner	Walker, Darren Ford Foundation, President
Kaiman, Elliot Wiggin and Dana, Construction Attorney	Mettam, Kirk Silman, Executive Vice President, Senior Principal	Rolland, Ann FXCollaborative Architects, Partner	Weisz, Claire WXY Studio, Founding Principal
Khattabi, Rod Grace Farms Foundation, Chief Accountability Officer & Justice Initiative Dir.	Menking, Bill Architect's Newspaper, Founder & Editor-in-Chief	Schaeberle, Carolyn Pratt Institute, Center Sustainable Design Strategies, Director	*Institutional affiliations are for identification purposes only.
King, Leslie, Esq. Carlton Fields, Partner, Construction Litigation	Mizzi, Joe Sciam Construction, President & COO	Sharples, Chris SHoP, Founding Principal	American Institute of Architects members
Klemmer, Andy Paratus Group, Founder & President	Moote, Kilian Know the Chain/Humanity United, Project Director	Short, Annabel Institute for Human Rights and Business (NY), Leading Built Environment	Dodge, Sarah AIA, Senior VP of Advocacy & Relationships
Liu, Jing SO-IL, Founding Principal	Natke, Patricia Saldaña UrbanWorks, Founding Principal	Slade, Hayes Slade Architecture and AIA NY, Immediate Past President	Proscky, Benjamin AIA NY, Executive Director
Lynch, Brad Brininstool + Lynch, Founding Principal	Oppenheimer, Nat Silman, Executive Vice President	Thatcher, Chelsea Grace Farms Foundation, Chief Marketing Officer	Seidel, Paula AIA, Senior Director, Industry and Int'l Relations
MacDonald, Shawn Verité, CEO	Prince, Sharon Grace Farms Foundation, CEO and Founder	Trubiano, Franca University of Pennsylvania, Mellon Faculty, Humanities, Urbanism and Design Initiative	Yao, Kim AIA NY, President and ARO, Principal
Malekshahi, Mark. M Zubatkin Owner Representation, LLC, Senior Project Manager			

Select Awards

Grace Farms was named one of the
ten most important architectural feats
of the last decade

Cultured magazine, Architect and Designer Lee Mindel

Grace Farms has been internationally recognized for its outstanding design, architectural significance, and its work to advance good locally and globally. Below is a selection of recognition and achievements since opening in 2015.

American Institute of Architects New York Chapter NYC Visionary Award (2019)

Sharon Prince and Grace Farms Foundation were awarded the NYC Visionary Award for the vision of Grace Farms as a new kind of public space that seamlessly blends architecture, art, and nature into a platform for people across sectors to convene and activate the Foundation's initiatives to advance good in the world.

Grace Farms named one of the ten most important architectural feats of the last decade by architect and designer Lee Mindel (2019)

In *Cultured* magazine, Mindel wrote, "SANAA's design of Grace Farms has blurred the lines of interior and exterior with a mesmerizing river-like building that flows in curvilinear planes, enclosing and shading outdoor spaces. Its unique, inventive and welcoming..."

Governor's Patron of the Arts Award (2018)

Grace Farms Foundation was awarded the Governor's Patron of the Arts Award in recognition of its contributions to the arts in Connecticut.

American Institute of Architects (AIA) National Architecture Honor Award (2017)

This AIA award is given annually and honors the best built works in American architecture.

Chicago Athenaeum International Architecture Award (2017)

Grace Farms was honored as a place "with a symbiotic relationship between architecture and nature" that is both "a restorative place and an active community that enables people to address the core issues facing society today."

American Institute of Architects (AIA) Connecticut Design Honor Award (2016)

The Honor Awards from the statewide chapter of the AIA celebrate the excellence of Connecticut projects. In its citation, the jury described Grace Farms as "a graceful project with an ephemeral quality, a quality of apparent simplicity that belies complexity in sectional and structural planning. The project preserved a substantial piece of the public Connecticut landscape for public and an unusual institutional use."

Fast Company Innovation by Design Awards, Social Good Finalist (2016)

Fast Company acknowledged Grace Farms Foundation and its mission in its design category that includes great architecture in the service of social good.

Mies Crown Hall Americas Prize (2014-2015)

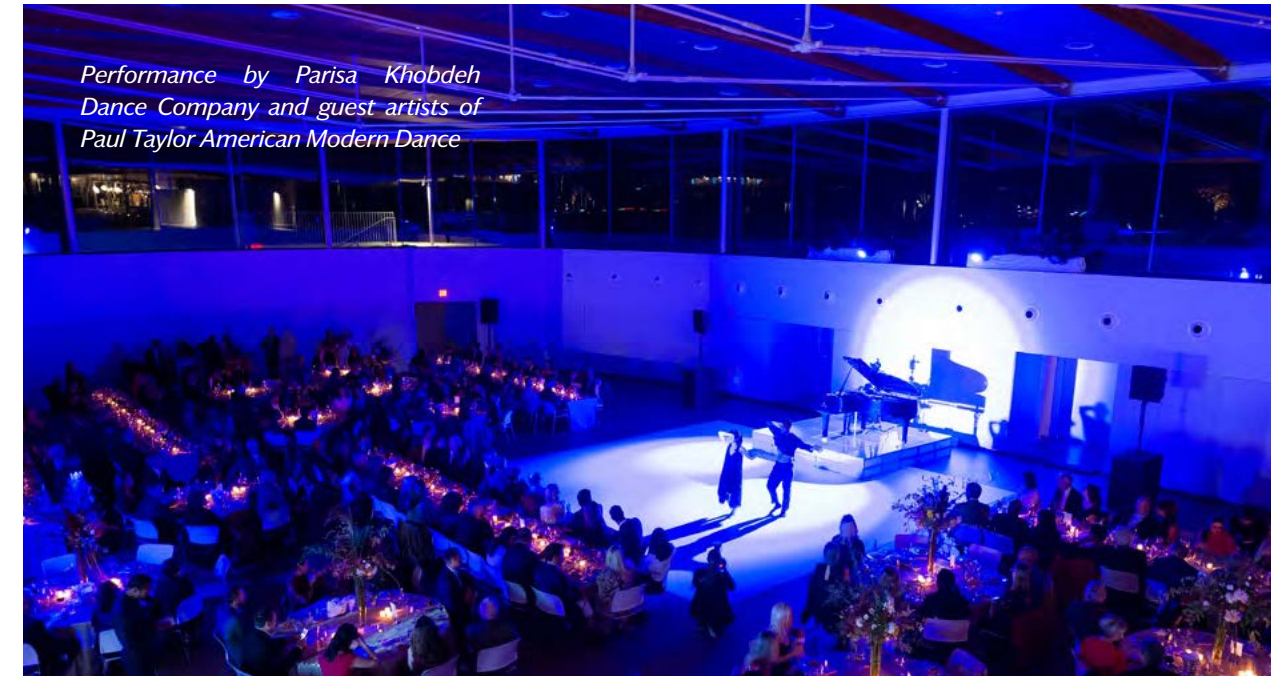
The second annual Mies Crown Hall Americas Prize recognized the best built works of architecture in the Americas realized from January 2014 through December 2015. Kazuyo Sejima and Ryue Nishizawa, founders of the Pritzker-winning architecture firm SANAA, were presented with the Award, the MCHAP Chair at IIT Architecture Chicago for the following academic year.

Individuals and firms that worked as a part of the Grace Farms design team have also been acknowledged for accomplishment in engineering, construction, acoustic systems, and lighting design. The full architectural team and other awards can be found at gracefarms.org.

Our Sustainable Future Benefit



Elegant zero-waste dinner in the Court for 300 human rights activists, scholars, acclaimed artists, art and culture influencers, and architecture and business leaders



Each October, on the anniversary of our founding, we host a benefit designed to achieve significant new outcomes and raise funds. More than 300 human rights activists, scholars, acclaimed artists, art and culture influencers, and architecture and business leaders, attended our fourth annual benefit, “Our Sustainable Future.”

The benefit highlighted the ways our five initiatives—nature, arts, justice, community, and faith—collaboratively build a more sustainable future.

The event raised half a million dollars to champion ethical and environmentally-responsible supply chains, a focus of the Grace Farms Foundation Architecture + Construction Working Group.

“With the expertise of our extraordinary interdisciplinary team, we commit to convening and collaborating, with Grace Farms as our nexus, to accelerate outcomes for change,” said Sharon Prince, Grace Farms Foundation’s CEO and Founder. “In four short years, we’ve seen that this way of working has inspired industries and individuals towards a more sustainable future.”



This connective and impactful evening advanced work across our initiatives to:

Combat modern slavery through training, policy, and advocacy, hosting free public programs that surface the issue of ethical supply chains and forced labor.

Initiate advocacy to encourage people to plant pollinators in their own communities.

Achieve our second, prestigious Leadership in Energy and Environmental Design (LEED) certification for Operations + Management.

Convene organizations that are leading sustainable efforts locally and regionally.

Guests enjoyed an elegant zero-waste dinner, a spotlight on the cocoa industry with Tony's Chocolonely's slave-free chocolate, auction items with sustainable and ethical supply chains, music from DJ ELEW and saxophonist Marcus Miller, and a special performance from Parisa Khobdeh Dance Company.

All benefit donations directly supported the Grace Farms Fund, which sustains Grace Farms and our five initiatives.

(Top Left) Jay Fielden, Board of Directors and Nature Initiative Director Mark Fowler (Top Right) Lexi Bowes-Lyon, Kenyon Victor Adams and Sharon Prince (Bottom Left) Abby Messitte and Alyson Shotz (Bottom Right) Co-Chair Abby Bangser and Monique Péan



Benefit Committee List

Co-Chairs

Abby Bangser
Amanda Martocchio

Matt Bangser
Dede & Jim Bartlett
Tiffany & Jeff Begoon
Vani & Seth Birnbaum
Jeanette & Michael Chen
Heather & Kyle Delaney
Yvonne & Jay Fielden
Barbara Gould
Tata Harper
Annie Zimmerli-Haskel & Jim Haskel
Holland & Knight - Meg Hely Walsh
Maggie Hulce Smith & Bob Smith
J.P. Morgan Private Bank—
Katie Wert Buckley & Laura Davis
Katherine & Peter Kend
Taylor McCall-Mazza & David Mazza
Alice B. Mahoney
Kathy Kladopoulos-Megdanis & Dr. Ernest Megdanis
Jane Musky & Tony Goldwyn
Angela Mwanza & Todd Blanke
Monique Péan & Stephen Glass
Sharon & Bob Prince
Liz & Randal Sandler
Lisa Schiff
Elsa & George Sykes
Sara & Bret Wiener
Eric Yarboi
The Jacquelyn & Gregory Zehner Foundation

(Left) DJ ELEW on piano, accompanied by saxophonist Marcus G. Miller

Financial Overview

Grace Farms was founded to advance good in the world - locally, nationally, and globally.

The preservation of the 80-acre site of Grace Farms, and the acclaimed SANAA-designed River building, was funded by our founders, along with other generous supporters, as an enduring peaceful, welcoming place for visitors to engage with the impactful work of the Foundation's five initiatives of nature, arts, justice, community, and faith, which are described in detail on prior pages in this report.

Private Operating Foundation

One of the principal architects of Grace Farms, Kazuyo Sejima, once described Grace Farms as a new kind of public space. In creating a significant publicly available space that invites collaboration, and brings forth potential movements that emanate out into the world, we also essentially created a new kind of foundation. We steward our private operating Foundation's annual income directly into operating and managing our place (Grace Farms)–with free admission year-round and free program space to select charities–and our initiatives' public and private programs.

Grace Farms Fund

All gifts to our designated Grace Farms Fund directly support the ongoing preservation and operation of Grace Farms and the programmatic work of our five initiatives. We're thankful for the generosity of a committed group of individuals for underwriting the Foundation's general and administrative expenses in 2019.

The future of Grace Farms is a shared vision with you. Our various supporters and partners, including passionate individuals, engaged philanthropic entities, members of the local and regional business community, and civic and municipal organizations, are ensuring that this unparalleled place and interdisciplinary work can manifest new outcomes for decades to come.

Roy Medile
Treasurer, Board of Directors

\$7.5m

Total 2019 costs to fund Grace Farms' **daily operations** (\$5.5m) and our **five initiatives** (\$2m)

\$6.3m

Total 2019 **general & administrative** expenditures,**including fundraising expenditures*

2019 income

Cash Balance \$ 1,730,000

Restricted and unrestricted \$ 13,790,000

Onsite Revenue \$597,300

Interest and Other \$27,600

* Donations associated with the Yale Center for Faith & Culture and expenses associated with Grace Community Church *totaled approximately \$353,000 (included in G&A expenses and not part of the Grace Farms Fund)*

Support

Attend our Programming

Experience the beauty of our site and the myriad of educational public programs

Volunteer Your Time and Skills

Contribute professional skills or provide valuable support during special programs

Become a Partner

Mission-aligned collaborations offer meaningful opportunities to achieve transformative change

Donate

One hundred percent of charitable donations directly fund the Grace Farms Fund unless directed otherwise. Visit gracefarms.org/support to support our initiatives and publicly available space for all.

Grace Farms Foundation, Inc. is a 501(c)3 not-for-profit organization, contributions to which are tax deductible to the fullest extent permitted by law. A copy of our latest annual financial report may be obtained from Grace Farms Foundation, Inc., 365 Lukes Wood Road, New Canaan, CT 06840 or the New York State Charities Bureau, 28 Liberty Street, 15th Floor, New York, NY 10005. For any donation of \$5,000 or more, the name and address of the donor and the total amount of the donation(s) will be included in the Foundation's required annual Form 990-PF filed with the IRS.

Board of Directors

- Sharon Prince
Chair, CEO and Founder
- Michael Chen
Vice Chair
- Roy Medile
Treasurer
- Abby Bangser
Founder and Creative Director, Object & Thing
- Jay Fielden
Former Editor-in-Chief, Esquire
- Barbara J. Gould
General Counsel, Alvarez & Marsal Capital Partners
- Peter Hunsinger
Founder and CMO, KANE 11
- Taylor McCall-Mazza
Advocate
- Angela Mwanza
Senior Vice President, UBS Wealth Management
- Robert Prince
Co-CIO, Bridgewater Associates
- Chelsea Thatcher
CMO, Grace Farms Foundation
- Dr. Miroslav Volf **Director**
Founder, The Yale Center for Faith & Culture



Photo Credits

Founder's Letter

p.4: Vanessa Van Ryzin; p.: Niv Rozenberg

About Grace Farms Foundation

p.10: Sahar Coston-Hardy; p.12: James Florio

Experience Grace Farms

p. 14-15: Sahar Coston-Hardy; p.16 (top) James Florio (bottom) Vanessa Van Ryzin; p. 17 James Forio (bottom) Dean Kaufman; p. 18 (top) Sahar Coston-Hardy (bottom) Vanessa Van Ryzin; p. 19 (left) Dean Kaufman (right) Sahar Coston-Hardy; p. 20-21: Dean Kaufman; p.22: (top) Sahar Coston-Hardy (bottom) Niv Rozenberg; p. 23 (top) Dean Kaufman (bottom) Sahar Coston-Hardy; p. 24 (top) Dean Kaufman (bottom) Sahar Coston-Hardy; p.25: (top) Julien Jarry (bottom) Sahar Coston-Hardy

Our Initiatives

p.30: Sahar Coston-Hardy; p.32: Dean Kaufman; p.33: Ann Dahlgren; p.35: (top) Vanessa Van Ryzin: Julien Jarry: (bottom); p.36: Paul Bickford; p.38: Sasha Arutyunova; p.39 Jenna Bascom; p.41: (top) Vanessa Van Ryzin: Ann Dahlgren: (bottom); p.42: Siegfried Modola; p.44: Dean Kaufman; p.45: Paul Bickford; p.47: Vanessa Van Ryzin; p.50-51: Jenna Bascom; p.52: Vanessa Van Ryzin; p.54-55: Dean Kaufman; p.57-58: Elias Rosario; p.59: Jenna Bascom; p.60: Paul Bickford; p.62: Dean Kaufman; p.63: Grace Farms Foundation; p.65: (top) U.S. Army Chaplain Corps: (bottom) Vanessa Van Ryzin

Partners

p. 68: Alexa Bennett; p. 71: Vanessa Van Ryzin

Highlight New Outcome | GFF A+CWC

p.73-74: Dean Kaufman; p.79: (top and bottom) Niv Rozenberg: (middle) Dean Kaufman

Recognition and Support

p.82: Dean Kaufman; p.84: Kyle Norton; p.85: Kyle Norton; p.86: (Top Left, Top Right, and Bottom Left) Jenna Bascom: (Bottom Right) Kyle Norton; p.87: Jenna Bascom

Board of Directors

p.9: James Florio

Photo Credits

p.92: Julien Jarry

Cover

Dean Kaufman



Located at

365 Lukes Wood Road
New Canaan, Connecticut 06840

Contact

203.920.1702
info@gracefarms.org

gracefarms.org/visit